



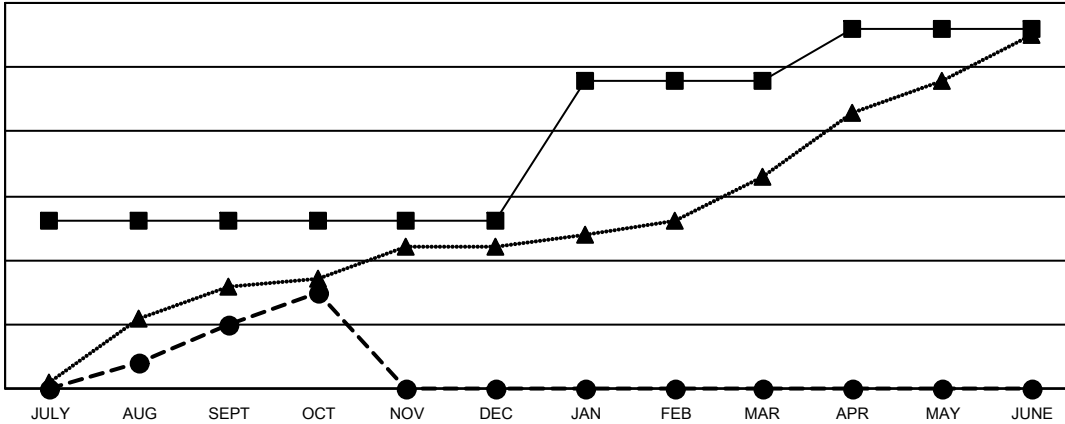
GMT: OPEN

GMT CA 6 - S

| Clubs                 |               |           |               |
|-----------------------|---------------|-----------|---------------|
| RESULTS FOR 2024-2025 |               |           |               |
| QUARTER               | NEW CLUB GOAL | NEW CLUBS | DROPPED CLUBS |
| JULY/AUG/SEPT         | 26            | 10        | 8             |
| OCT/NOV/DEC           | 0             | 5         | 2             |
| JAN/FEB/MAR           | 22            | 0         | 0             |
| APR/MAY/JUNE          | 8             | 0         | 0             |

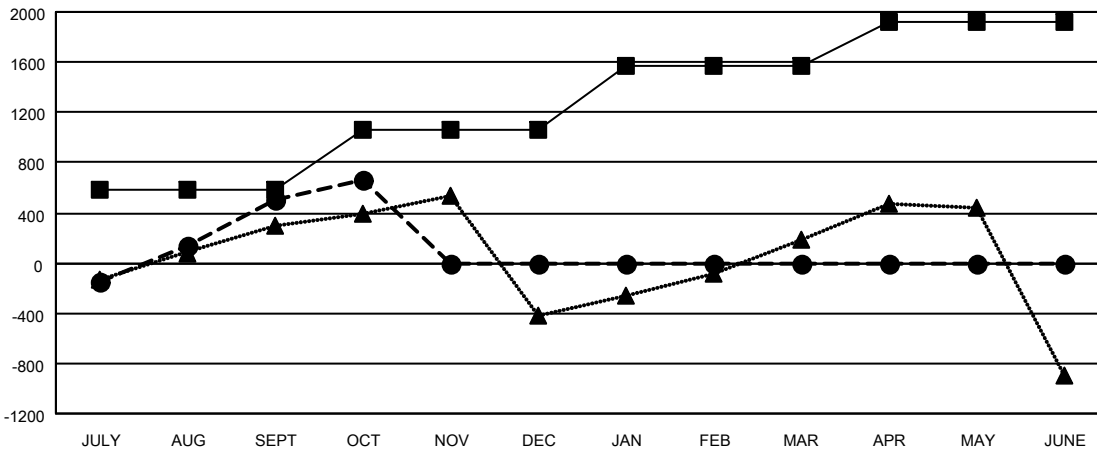
| Members               |                        |                      |  |
|-----------------------|------------------------|----------------------|--|
| RESULTS FOR 2024-2025 |                        |                      |  |
| QUARTER               | MEMBER GROWTH NET GOAL | MEMBER GROWTH ACTUAL | DROPPED MEMBERS ACTUAL (including transfers) |
| JULY/AUG/SEPT         | 585                    | 1,416                | 725  |
| OCT/NOV/DEC           | 475                    | 373                  | 151  |
| JAN/FEB/MAR           | 510                    | 0                    | 0  |
| APR/MAY/JUNE          | 355                    | 0                    | 0  |

GOALS AND ACTUAL NEW CLUBS CUMULATIVE



- - CURRENT YEAR GOALS FOR NEW CLUBS
- - CURRENT YEAR ACTUAL NEW CLUBS
- ▲ - LAST YEAR ACTUAL NEW CLUBS

GOALS AND ACTUAL MEMBERS CUMULATIVE



- - MEMBER GROWTH NET GOAL
- - MEMBER GROWTH ACTUAL
- ▲ - LAST YEAR MEMBERSHIP ACTUAL

|                        |   |                                   |
|------------------------|---|-----------------------------------|
| DROPPED CLUBS: 10      | 255 CLUBS OF 705 ADDED 1 OR MORE NEW MEMBERS              | <b>GENDER DISTRIBUTION</b>        |
|                        |   | MALE 13,798 (73.50%)              |
|                        |   | FEMALE 4,975 (26.50%)             |
| <b>DROPPED MEMBERS</b> | <a href="#">CLICK HERE FOR CUMULATIVE MEMBERSHIP DATA</a> | TOTAL FAMILY UNIT MEMBERS 0       |
| DECEASED 19            |   | FAMILY MEMBERS PAYING HALF DUES 0 |
| CLUB CANCELLED 130     |   |                                   |
| OTHER 719              |   |                                   |
| <b>TOTAL 868</b>       |   |                                   |